

SCRATCH/MY/BACK

Product Sheet Model A





Description

The model A plate is based on the dimensions of the widely used boxes for mini format pedals that are all the rage right now.

For the list of pedals already validated go to the page:

<http://scratchmyback.fr/en/pedals-compatibility/>

CONTENTS : 1 Scratch/My/Back plate model A in aluminium with Velcro



Apparence

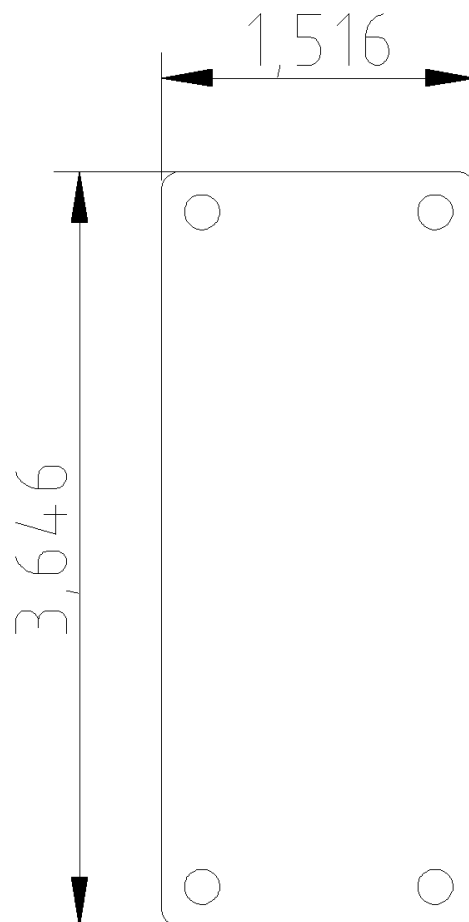




Dimensions

This visual is not at all scaled, if you want to have a scale diagram go to this link that will allow you to print a template to scale, cut and validate compatibility support with your pedal.

<http://scratchmyback.fr/wp-content/uploads/Template-A-EN.pdf>

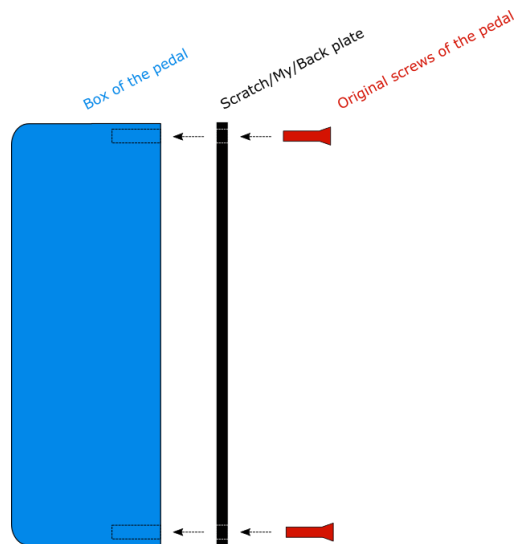




Installation

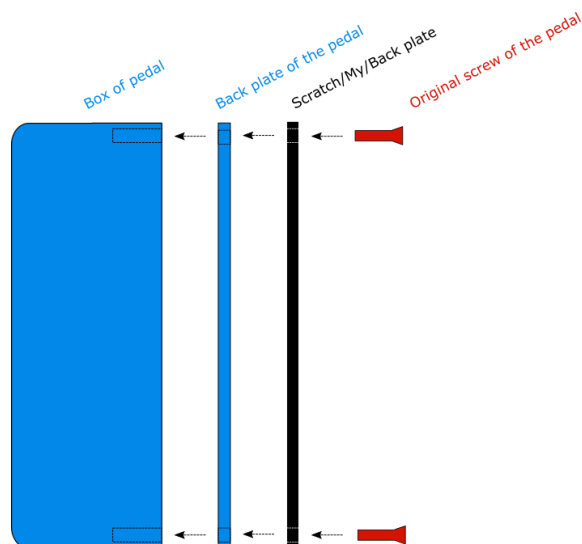
Installation Solution 1 :

Simply replace the back plate of your pedal and reuse the original screws to put Scratch/My/Back support instead.



Installation Solution 2 :

Unscrew the back plate of your pedal, without removing it, then reuse the screws to add the Scratch/My/Back plate to the box of your effect.



Do not excessively tighten the screws will prevent deformation or breakage of the aluminum plate where there is little space between the plate and the screw holes of the pedal.



Compatibility

- To confirm the compatibility with your pedal of effect you just have to go on our Internet site where are referenced the pedals already validated :

<http://scratchmyback.fr/en/pedals-compatibility/>

- If your pedal is not there, do not panic go to the next page which will provide you with a template to print to manually check the compatibility of the plate :

<http://scratchmyback.fr/wp-content/uploads/Template-A-EN.pdf>

- Scratch/My/Back plate unlike the original backplates do not have recess for reasons of strength. If pedal elements use this recess, go to the "Installation Solution 2" described in the "Installation" section.



<http://www.scratchmyback.fr/>



contact@scratchmyback.fr



<https://www.facebook.com/scratchmybackfr/>



<https://twitter.com/scratchmybackfr>